

[테크놀러지 세션]

# A Journey to Smart Building



## 이재미

엔터프라이즈 네트워킹  
시스템 엔지니어링 리더

시스코 코리아

# Cisco in Smart Buildings

Top priorities for Businesses as they return to buildings

## Sustainable

Energy efficient, carbon reducing designs that create an agile environment, with 90W PoE technology built in as the 4<sup>th</sup> utility.



## Convergence

Eliminating siloed networks; powering, connecting and securing the building and simplifying design and operations

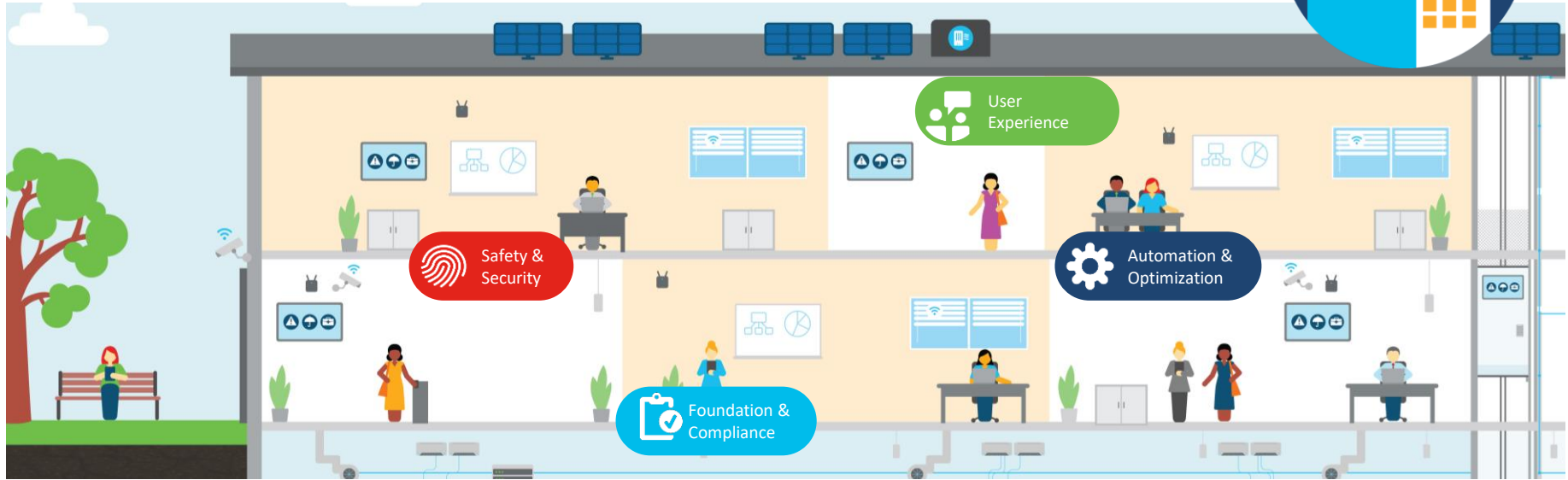


## Future of Work

Enable flexible workspaces, hoteling and hot desking with space utilization and insights to enable employees to use as desired



# Cisco for smart buildings



## Building Foundation & Compliance

- 4th Utility
- Regulatory Measurement & Validation

## Safety & Security

- People safety & security
- Building Systems Cyber Security

## Automation & Optimization

- Environmental Monitoring, Control & Optimization
- Asset Management

## User Experience

- Smart, Intuitive Spaces
- Pervasive & Secure Connectivity

# Use case investments: smart buildings

NetZero, Well & LEED Buildings

Smart, Intuitive Spaces

Building Access Data Compliance

Environmental Monitoring and Control

Predictive maintenance

Regulatory Measurement & Validation

Environment Optimization

Collaborative Workspaces



Innovators

Early adopters

4th Utility

Building Systems Cyber Security

Asset Management

Pervasive & Secure Connectivity

People Safety & Security

Mobile Security

DVR Physical Security

Traditional Lighting

Early majority

Late majority

Mature

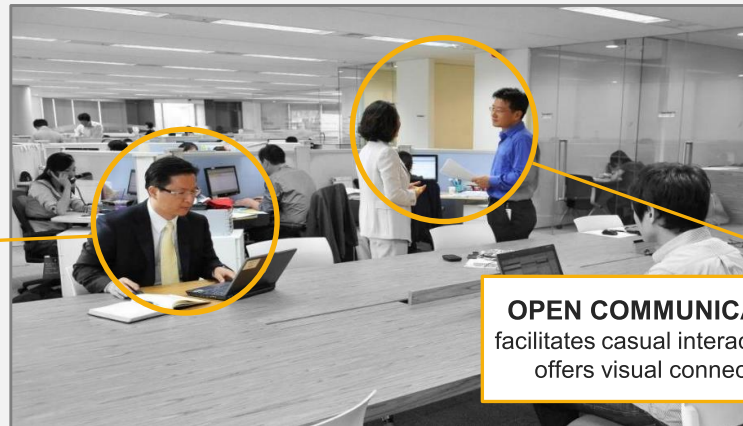


## Case Study



### LESS HIEARCHY / INCREASE LEADERSHIP ACCESS

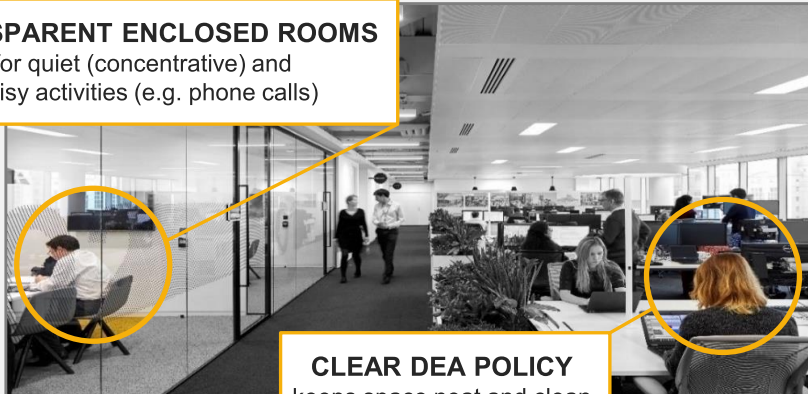
Leaders sit out in the open with staff



**OPEN COMMUNICATION**  
facilitates casual interaction and offers visual connectivity

### TRANSPARENT ENCLOSED ROOMS

for quiet (concentrative) and noisy activities (e.g. phone calls)



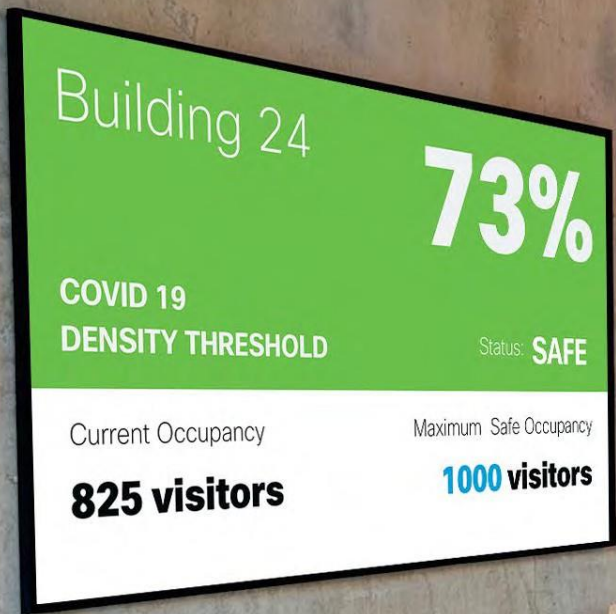
**CLEAR DEA POLICY**  
keeps space neat and clean

### HIGH-STANDARD ACOUSTIC DESIGN

- White noise
- Soft Textures



**WORK IS VISIBLE**



Use digital signage in the lobby can be used to display the real time density threshold status to visitors as they enter the building. This helps in building employee confidence.

# Cisco Smart Workspaces



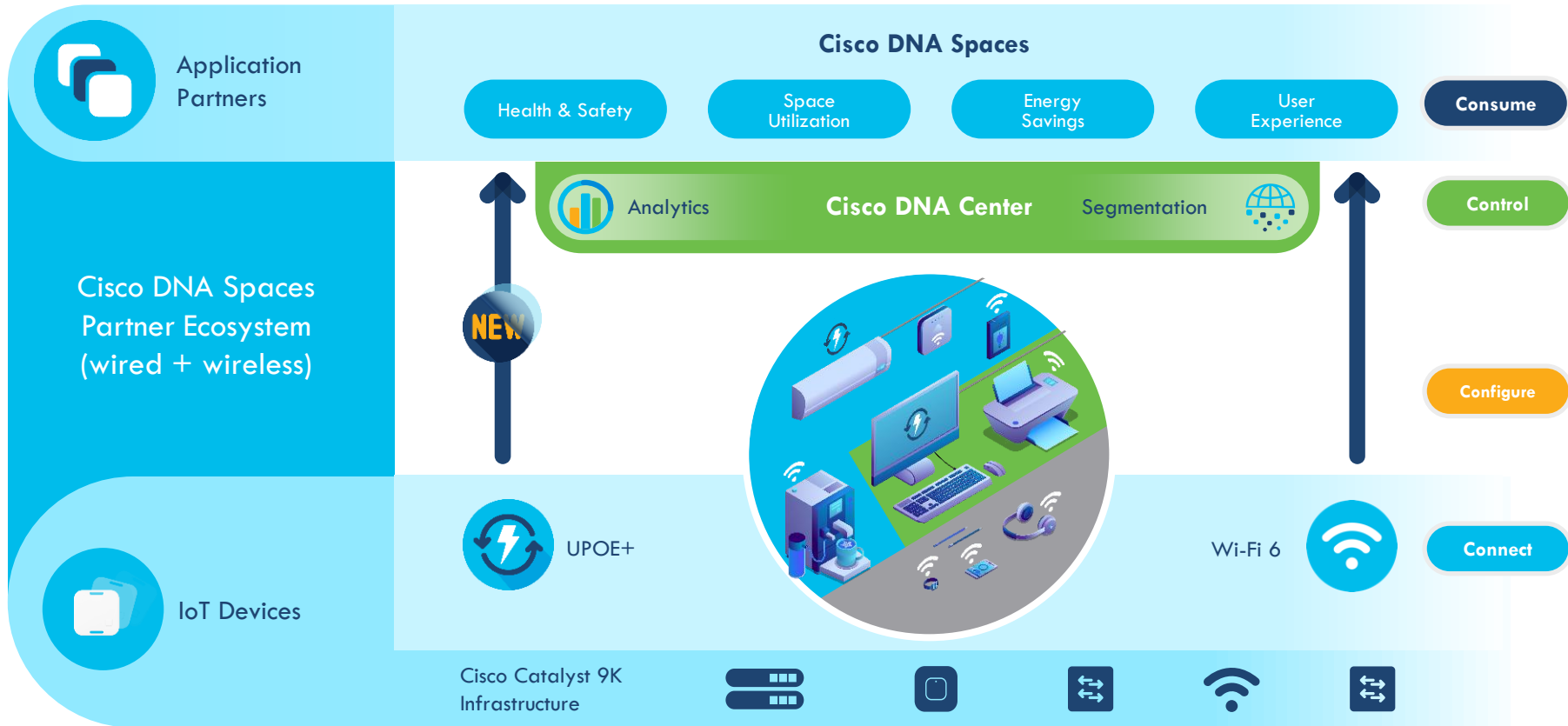
Hybrid Work is here!

Integration of different sensors and technologies drives building health (AQI, CO2, Temperature, Occupancy)

**DNA Spaces + Network Experiences + Collab + BLE integrations drive outcomes**

Under development, Target GA 2H FY22

# Catalyst로 완성하는 스마트 빌딩





Between meeting human needs and a sustainable  
future



there's a bridge.

